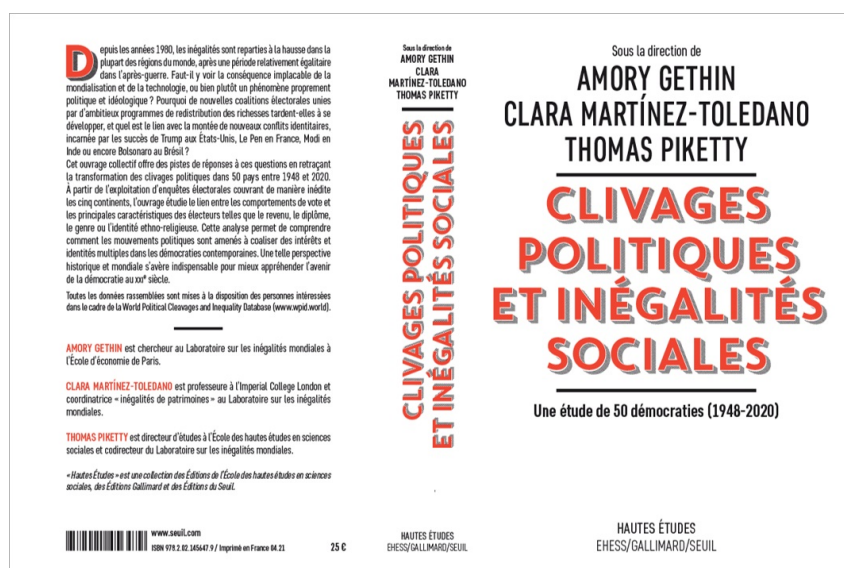




World Inequality Lab's newsletter

Book: "Political Cleavages and Social Inequalities"



Who votes for whom and why? Why has growing inequality in many parts of the world not led to renewed class-based conflicts, and seems instead to have come with the emergence of new divides over identity and integration?

On April 1st 2021, Amory Gethin, Clara Martínez-Toledano and Thomas Piketty published "*Political Cleavages and Social Inequalities*" (in French), a collective work of 20 researchers around the world. The authors draw on a unique set of surveys conducted between 1948 and 2020 in fifty countries on five continents, analyzing the links between voters' political preferences and socioeconomic characteristics, such as income, education, wealth, occupation, religion, ethnicity, age, and gender. This analysis sheds new light on how political movements succeed in coalescing multiple interests and identities in contemporary democracies. It also helps us understand the conditions under which conflicts over inequality become politically salient, as well as the similarities and constraints of voters supporting ethnonationalist politicians like Narendra Modi, Jair Bolsonaro, Marine Le Pen, and Donald Trump.

Book details

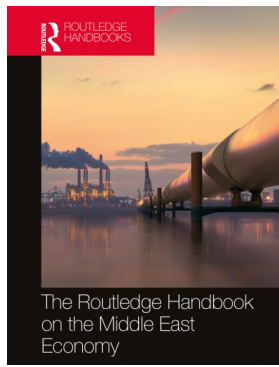
>> [French Edition] Amory Gethin, Clara Martínez-Toledano, Thomas Piketty (eds), *Clivages politiques et inégalités sociales*, Seuil, 01 April 2021.

>> [English Edition] Amory Gethin, Clara Martínez-Toledano, Thomas Piketty (eds) *Political Cleavages and Social Inequalities*, Harvard University Press, 16 November 2021.

[The World Political Cleavages and Inequality Database \(WPID\)](https://wpid.world/)

The World Political Cleavages and Inequality Database (WPID) is the companion website of the book. The central aim is to provide open and convenient access to the most extensive available dataset on the structure of political cleavages and social inequalities in electoral democracies, located on the five continents, from the mid-20th century to the present.

>> Explore the data: <https://wpid.world/>



Middle East Economy

Facundo Alvaredo, Lydia Assouad and Thomas Piketty contributed to the *Routledge Handbook on the Middle East Economy*, published on July 9th 2021. The chapter "Measuring Inequality in the Middle East", part of the section IV on 'Poverty, Inequality and Social Policy', comes as a continuity of the research papers and data on inequality in the Middle East, available on WID.world.

[Read more](#)

2022 World Inequality Report & World Inequality Conference

CALL FOR PAPERS

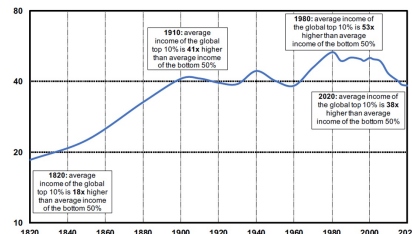
World Inequality Conference #2
Paris, December 7-8 2021



The second edition of the **World Inequality Report** will be released on December 7th, 2021, and presented during the **World Inequality Conference** (previously WID.world Conference), to be hosted at the Paris School of Economics on December 7th and 8th, 2021. The conference will be structured around three axes: (i) latest findings on global inequality and implications for future research and for the global policy debate, (ii) progress made in the DINA-Distributional National Accounts agenda and (iii) presentations of research on all dimensions of socioeconomic inequality, for which we are welcoming submissions.

Paper submission. Please submit your paper in pdf format to conference@wid.world by September 5th, 2021, indicating whether you will require funding, and whether you are a PhD student. Decisions are expected to be announced by September 20th, 2021. The complete call is available [here](#).

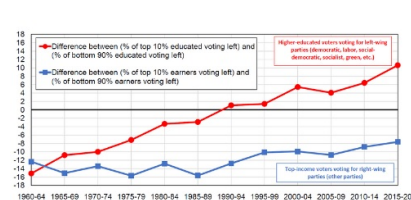
Selection of working papers



Global Income Inequality, 1820-2020

In this paper, **Lucas Chancel and Thomas Piketty** mobilize newly available historical series from the World Inequality Database to construct world income distribution estimates from 1820 to 2020. The authors find that the level of global income inequality has always been very large, reflecting the persistence of a highly hierarchical world economic system.

[Read more](#)

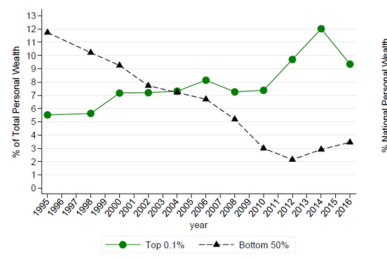


Changing Political Cleavages In 21 Western Democracies

In this paper, **Amory Gethin, Clara Martínez-Toledano and Thomas Piketty** provide new evidence on the long-run evolution of political cleavages in 21 Western democracies by exploiting a new database on the vote by socioeconomic characteristic covering over 300 elections held between 1948 and 2020. In the 1950s-1960s, the vote for democratic, labor, social democratic, socialist, and affiliated parties was associated with...

[Read more](#)

Figure 1: The inversion of fortunes between 1995 and 2016

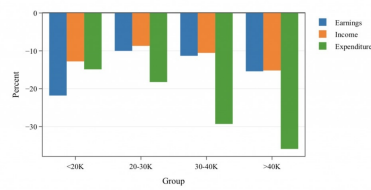


The Concentration Of Personal Wealth In Italy

In this paper, **Paolo Acciari, Facundo Alvaredo and Salvatore Morelli** expand the windows of observation on the distribution of personal wealth using a novel source on the full record of inheritance tax files. The data cover up to 63% of the deceased population and are available between 1995 and 2016, a period of substantial economic turbulence and structural reform for the Italian economy.

[Read more](#)

Panel A: Implied savings rates (net balance)

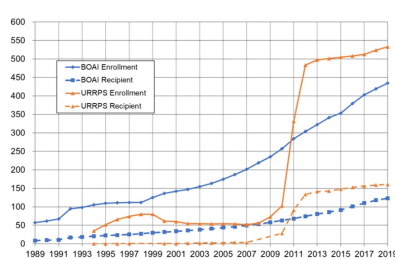


Developing Countries in Times of Covid: Comparing Inequality Impacts And Policy Responses

In this brief, **Tancrède Voituriez and Lucas Chancel** explore the socioeconomic inequality impacts of the Covid-19 crisis, within and across countries, and the impacts of the policy responses designed to mitigate them. Recalling that pre-Covid economic and sanitary conditions were unfavorable to non-OECD countries, the brief emphasizes the role played by low-tech and prevention measures in these countries

[Read more](#)

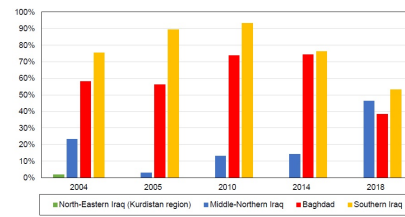
Figure 1. Enrollment and recipients in China's pension system (million persons)



China's Pension System

In this paper, **Li Yang** reviews the latest development of China's public pension system. Last several decades saw China's tremendous achievement in various public pension reforms. Especially since the 11th Five-Year Plan (2006-2010), the reform has accelerated. By 2019, the public pension system in China has covered almost one billion adults, which makes it the biggest pension system in the world.

[Read more](#)



Political Cleavages in Algeria, Iraq, and Turkey

In this paper, **Lydia Assouad, Amory Gethin, Thomas Piketty and Juliet-Nil Uraz** draw on political attitudes surveys to document the evolution of political cleavages in light of inequality dynamics in Algeria (2002-2018), Iraq (2005-2018), and Turkey (1991-2018). The authors investigate how social divides and ethno-religious conflicts shape voting behaviors in these three countries of the Middle East and North Africa (MENA) region.

[Read more](#)

To access all the publications of the World Inequality Lab, check out the dedicated page on WID.world

Debates on equality



The next Debate on Equality will take place on **September 15th, 2021**:
"[Une brève histoire de l'égalité](#)", by Thomas Piketty (in French)

[Register](#)

Upcoming sessions:

- September 22nd, 2021: "[L'Information est un bien public. Refonder la propriété des médias](#)", with Julia Cagé and Benoît Huet" (French)
- October 6th, 2021: "[Tous des bons profs. Un choix de société](#)", with Asma Benhenda (French)

Check out the [full programme](#)

Replays: the recordings of our debates are available on the [WID.world Youtube channel](#).

In the media



Will philanthropists save the world? with Lucas Chancel

[Watch the replay](#)



Towards a global minimum corporate tax ? with Thomas Piketty

[Listen to the interview](#)

Selection of recent contributions:

English

- **Le Monde**: "[The G7 legalizes the right to defraud](#)", by Thomas Piketty, 15/06/2021.
- **The Guardian**: "[Biden corporate tax plan could earn EU and UK billions, study shows](#)", with Gabriel Zucman, 01/06/2021.
- **The Economist**: "[Educated voters' leftward shift is surprisingly old and international](#)", with Amory Gethin, Clara Martinez-Toledano and Thomas Piketty, 29/05/2021.
- **Washington Post**: "[Don't wait for billionaires to sell their stock. Tax their riches now](#)", with Gabriel Zucman and Emmanuel Saez, 14/04/2021.

Other languages

- [AUDIO] **France Inter**: "[Reprise et politique économique](#)", with Thomas Piketty, 21/05/2021. (French)
- **Vice**: "[La France est le pays qui compte le plus d'héritiers parmi ses milliardaires](#)", with Lucas Chancel, 21/05/2021. (French)
- **La Tercera**: "[La visión de Thomas Piketty sobre el impuesto a las personas de alto patrimonio](#)", by Ignacio Flores and Thomas Piketty, 10/05/2021. (Spanish)
- [VIDEO] **BFM**: "[La librairie de l'éco: Clivages politiques et inégalités sociales](#)", with Amory Gethin, 07/05/2021. (French)

*To access all the media contributions of the World Inequality Lab, check out the dedicated page on www.inequalitylab.world
Any questions: press@wid.world*

More about WID.world



WID.world relies on the combined effort of an international network of over a hundred researchers from all continents...

[Read More >](#)

The World Inequality Database is funded by public and non-profit institutions...

[Read More >](#)

WID.world aims to provide open access to the most extensive available database on the historical evolution of the world distribution of income and wealth...

[Read More >](#)

World Inequality Lab
48 Boulevard Jourdan
75014 Paris, France



Media contact: press@wid.world

Editors: Lucas Chancel, Olivia Ronsain

Disclaimer

You have received this email as you showed interest in updates on economic inequality data and research.

If you are no longer interested in receiving news from the WL, you can unsubscribe using the link below

[Unsubscribe here](#)